

Product specification

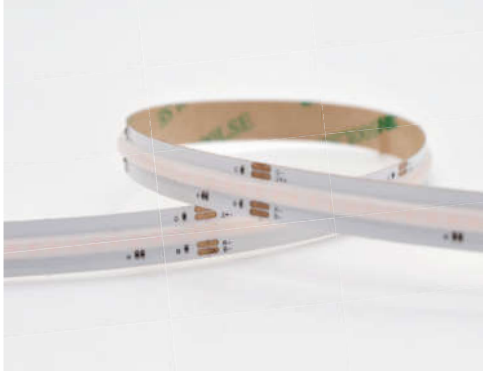
Model : GE840RGBCOBA

RGB COB LED STRIP



840
LEDs/m

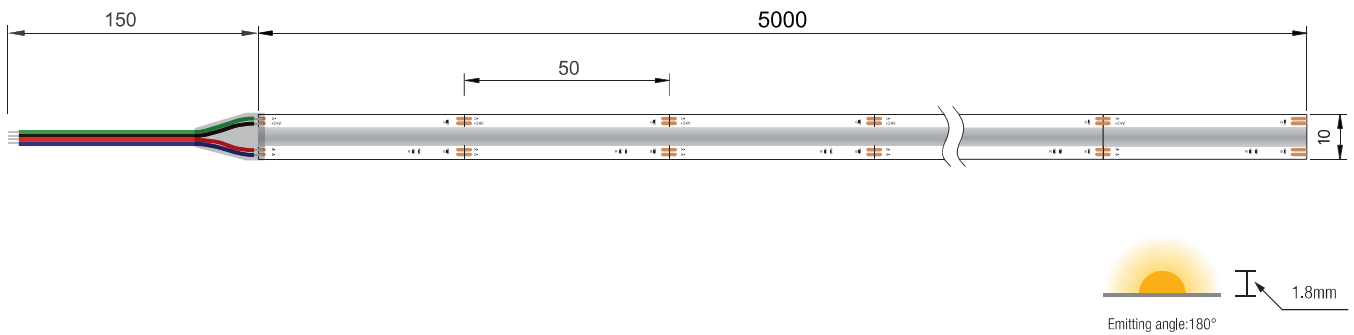
RGB COB LED Strip



Product Features

1. No spot, no shadow, soft light.
2. The antistatic grade (MIL – STD – 883 – e) : HBM level 2 (2000 ~ 4000 v)
3. The largest emitting angle can reach to 180°
4. Can be cut, and be free to cut off and weld along with the above cutting line.

Structure



Parameter

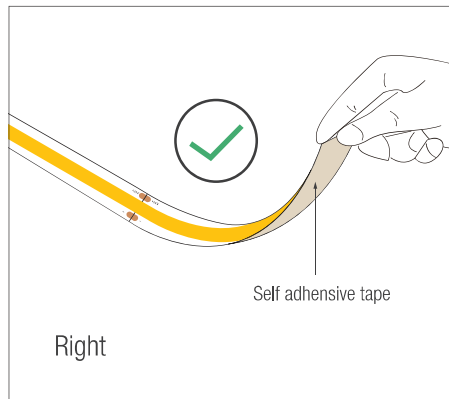
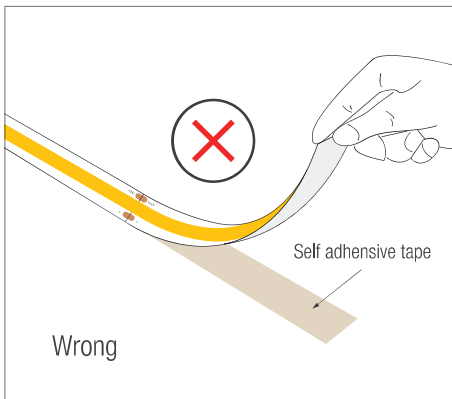
Wavelength (nm)

- R:620–630nm
- G:520–530nm
- B:465–475nm

Input voltage	DC24V
Max Power/m	15w
Max current / unit	30mA
LEDs /m	840leds
SMD Type	COB RGB
Working hour	30000h
Working temperature	-25 °C ~ +45 °C
Cutable length	50mm
PCB Width	10

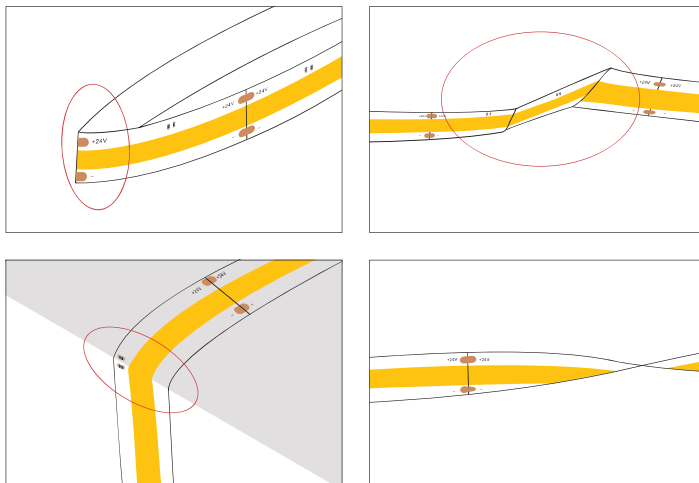
RGB COB LED Strip

Cautions

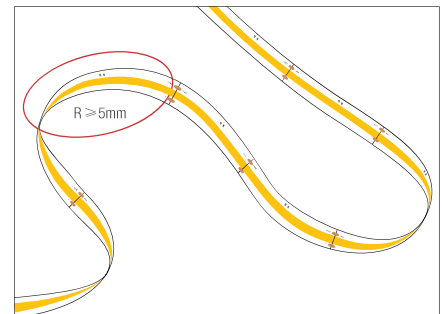


If the led strip needs to be torn up, please make sure that the self adhesive tape is torn with the led strip, otherwise the led strip will be damaged


When install the led strip, please note the installation technique. The led strip can be bent, but not distorted, as shown below.




Distortion(Wrong)



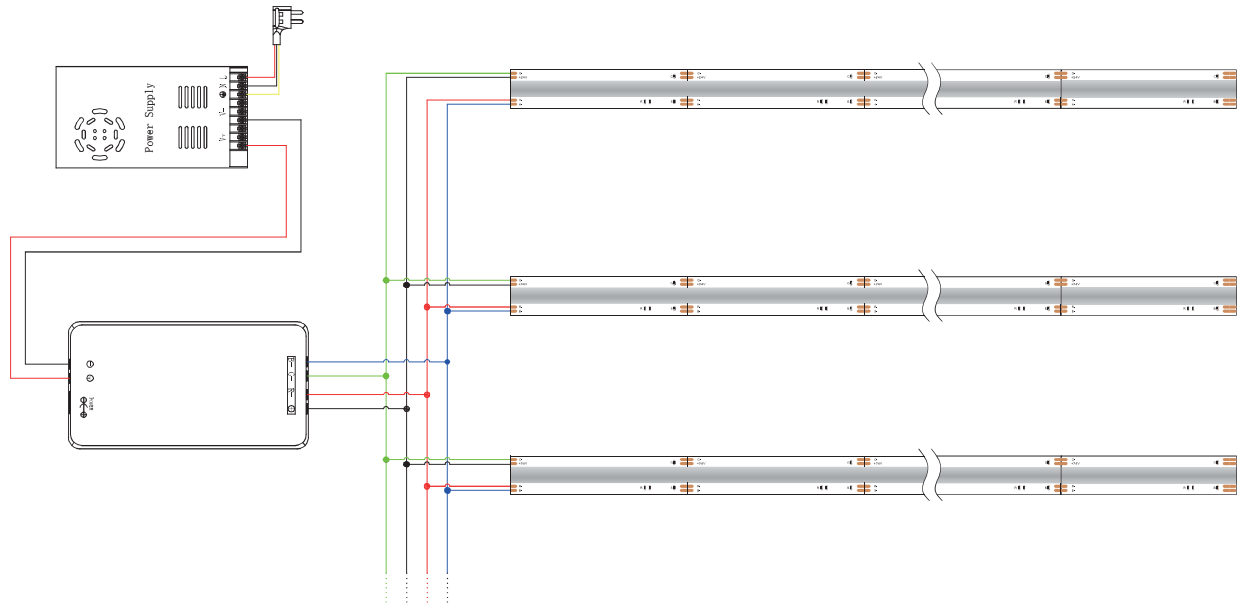
Bend(Right)

 LED strips are low voltage products, you must use the power supply(transformer). Please don't connect the led strip directly to the AC 110v or AC 220v, otherwise it will burn out the LED strips.

 Clean up the installation surface, it will ensure the reliability of the adhesive, The electrical connection process must be operated by a professional person.

RGB COB LED Strip

Wiring Diagram



Package

